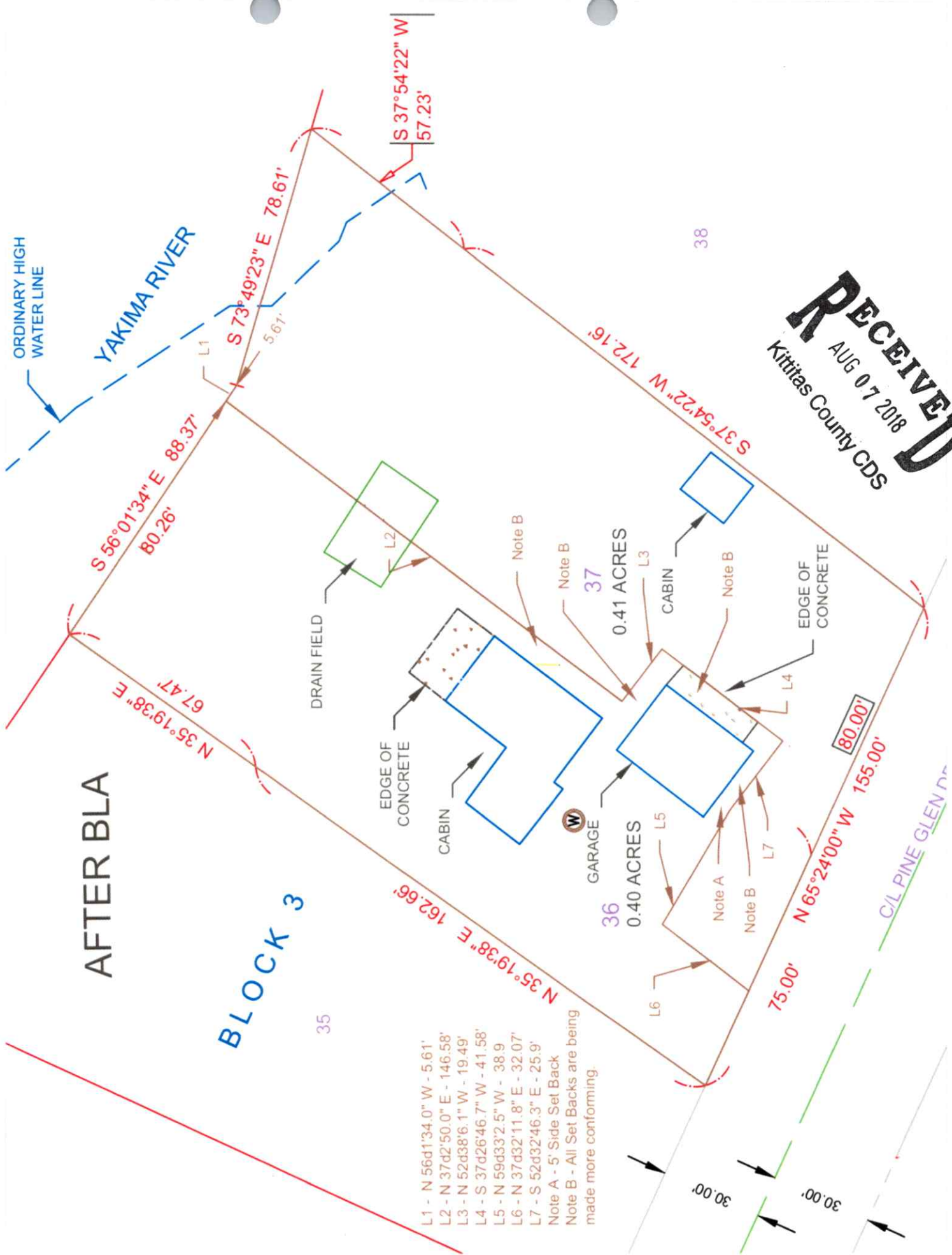


RECEIVED
 AUG 07 2018
 Kittitas County CDS



AFTER BLA

BLOCK 3

- L1 - N 56d1'34.0" W - 5.61'
- L2 - N 37d2'50.0" E - 146.58'
- L3 - N 52d38'6.1" W - 19.49'
- L4 - S 37d26'46.7" W - 41.58'
- L5 - N 59d33'2.5" W - 38.9'
- L6 - N 37d32'11.8" E - 32.07'
- L7 - S 52d32'46.3" E - 25.9'

Note A - 5' Side Set Back
 Note B - All Set Backs are being made more conforming.

30.00'
 30.00'

